

PMC531/532 PRODUCT SHEET

Voice Processing Modules

FEATURES

Complete Media Solution in PTMC Format

Scalable to More than 2000 Ports of Voice over Packet

Full Feature Set for Wireless and Wireline Applications

Onboard Application Processor

Media and Voice Processing Software

NexusWare® Core CGL Distribution and Development Tools

Field-Hardened Voice Processing Technology

Low Power

Conferencing up to 1284 Participants



The PMC531/532 Media Processing Modules provide integrated media gateway functionality and deliver the industry's highest port density in a PTMC-compliant mezzanine card form factor. The PMC531/532 can be deployed on OEM proprietary blades or open system carrier cards that support PTMC option 5 pinouts.

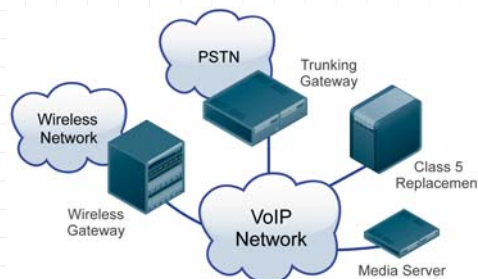
Full Feature Set for Wireless and Wireline Applications

The PMC531/532 Voice Processing Modules provide a robust feature set of functionality for media gateway applications. PT's Voice Processing Software delivers field-hardened functionality for media processing functions, such as voice coding, echo cancellation, conferencing, and fax relay. Wireless and wireline applications

can be enabled through a wide range of industry standard vocoders and network-specific protocols. Control protocols, such as SIP/RTP, allow seamless integration into softswitched networks and management interfaces over Ethernet.

Scalable for Carrier-Grade Gateway Applications

The PMC531/532 voice modules offer a wide range of scalability between several hundred and a thousand ports of low-bit-rate voice traffic. Designed to be a drop-in solution for OEM gateways, a PMC531/532 can be used in a variety of carrier-grade media gateway applications, including trunk gateways, Class 5 replacement switches, digital loop carriers, access gateways, radio network controllers, mobile switching centers, and base station controllers. The PMC531/532 also supports complete media server functionality, including conferencing, announcements, recording, and Lawful Interception/CALEA functionality to meet legal intercept requirements.



The PMC531/532 provides media module and server functionality in a wide range of next-generation network applications.



PMC531/532 PRODUCT SHEET

Technical Specifications

ORDERING INFORMATION

PT-PMC531-12206
1000 Ports of Voice/Fax PTMC Module

PT-PMC532-12207
2000 Ports of Voice/Fax PTMC Module

Software Options

PT-NXMGRTU-12216
NexusWare® Software Right-to-Use for PMC531

NXMGRTU-12217
NexusWare Software Right-to-Use for PMC532

PT-NXSWARE-11359
NexusWare Core Development Kit,
Includes All Development Tools and API

For more information visit www.pt.com
or call your local representative.

Media, Protocol, and Signaling Specifications

Port Capacity

- PMC531: Up to 1008 ports with 128 ms echo cancellation
- PMC532: Up to 2016 ports with 128 ms echo cancellation

Endpoint Configuration

- IP to IP
- IP to TDM
- TDM to TDM

Voice Coding

- Wireline: G.711/Appendix I and II, G.726, G.723.1/A, G.729A/B
- Wireless: GSM AMR, EVRC
- G.168-2002-compliant, up to 128 ms configurable tail lengths

In-Band Signaling

- DTMF, MF detection and generation, packet and TDM side
- Detection of fax and data modem tones
- Generation of tones
- Caller ID Type 1 and 2

Media Protocols

- RTP/RTCP per RFC 3550/3551
- DTMF over RTP per RFC 2833

Network Protocols

- IPv4
- ICMP, DHCP

Wireless Protocol Support

- I_u user plane protocol per 3GPP TR 25.415
- TFO and TrFO

Fax

- T.38 Internet Fax Protocol, G.711 pass-through

Media Server Capabilities

- Conferencing up to 1284 participants
- Announcements, recording: local and host storage options
- Full support of Lawful Interception/CALEA requirements

Quality of Assurance

- VLAN, IEE 802.1P/Q, and MPLS

Hardware Specifications

Form Factor

- PCI Mezzanine Card, PICMG® 2.15-compliant pinouts
- PMC531: Configuration 5
- PMC532: Configuration 5

Ethernet

- PMC531: Single MDI
- PMC532: Dual MDI

TDM

- H.110 CT bus-compliant

Voltages

- 3.3 V and 5 V

Operating Temperature

- Commercial 0 to 50°C (32 to 122°F)

Power Consumption

- PMC531: 11 W
- PMC532: 14.8 W

CONTACT US

205 Indigo Creek Drive
Rochester, NY 14626

tel: +1.585.256.0200

fax: +1.585.256.0791

E-mail: sales@pt.com

